

# 7.58 ACRE DEVELOPMENT SITE FOR SALE

NNA Hanley Ave, Coeur d'Alene, ID



**Size:** 7.58 Acres  
**SF:** 330,185  
**Price:** \$6,100,000  
**Price/SF:** \$18.47  
**Zoning:** C-17

**7FOLD**  
REALTY  
ADVISORS

**Donnie Murrell**

208-758-7539

[donnie@7foldrealty.com](mailto:donnie@7foldrealty.com)

**BERKSHIRE  
HATHAWAY** | JACKLIN  
REAL ESTATE



# THE OPPORTUNITY

## PROPERTY HIGHLIGHTS

- Rare 7.58 acre parcel in central Coeur d'Alene
- C-17 zoning – city's most flexible designation, allowing high-density multi-family, commercial, office, and mixed-use development
- Prime, strategic development site with exceptional visibility and connectivity
- Ideal for high-density multi-family development (up to 17 units per acre)
- Adjacent to West Hanley Ave and North Atlas Rd for excellent access
- Surrounded by established residential neighborhoods, schools, and parks
- 7+ miles of paved trails and 90+ acres of parks & open space nearby
- Minutes to McEuen Park, the Kroc Center, Riverstone, CDA Resort, and the beach
- Under 8 minutes to I-90 and US-95; less than 30 minutes to downtown Spokane
- Strong growth corridor in one of Idaho's fastest-growing markets

## PROPERTY INFORMATION

- Parcel No: C00000330050
- AIN: 248988
- Zoning - C-17
- Utilities: Water, Sewer, Electric & Gas available.
- Property will be serviced by the City of Coeur d' Alene
- Phase 1 completed in 2023
- [Link to City of Coeur d' Alene Zoning Information](#)



# AREA SCHOOLS, NEIGHBORHOODS & BUSINESSES



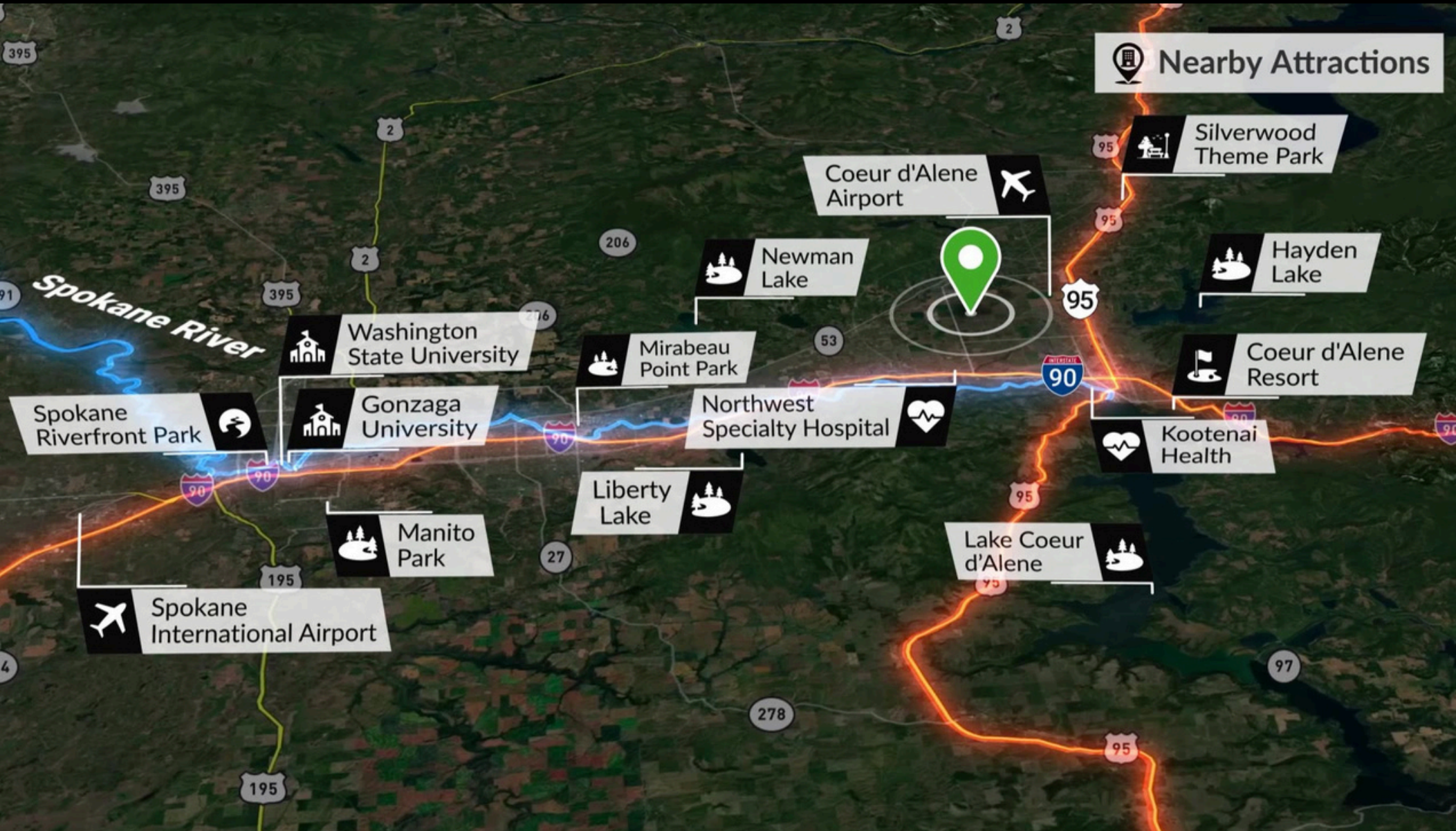


# PICTURES



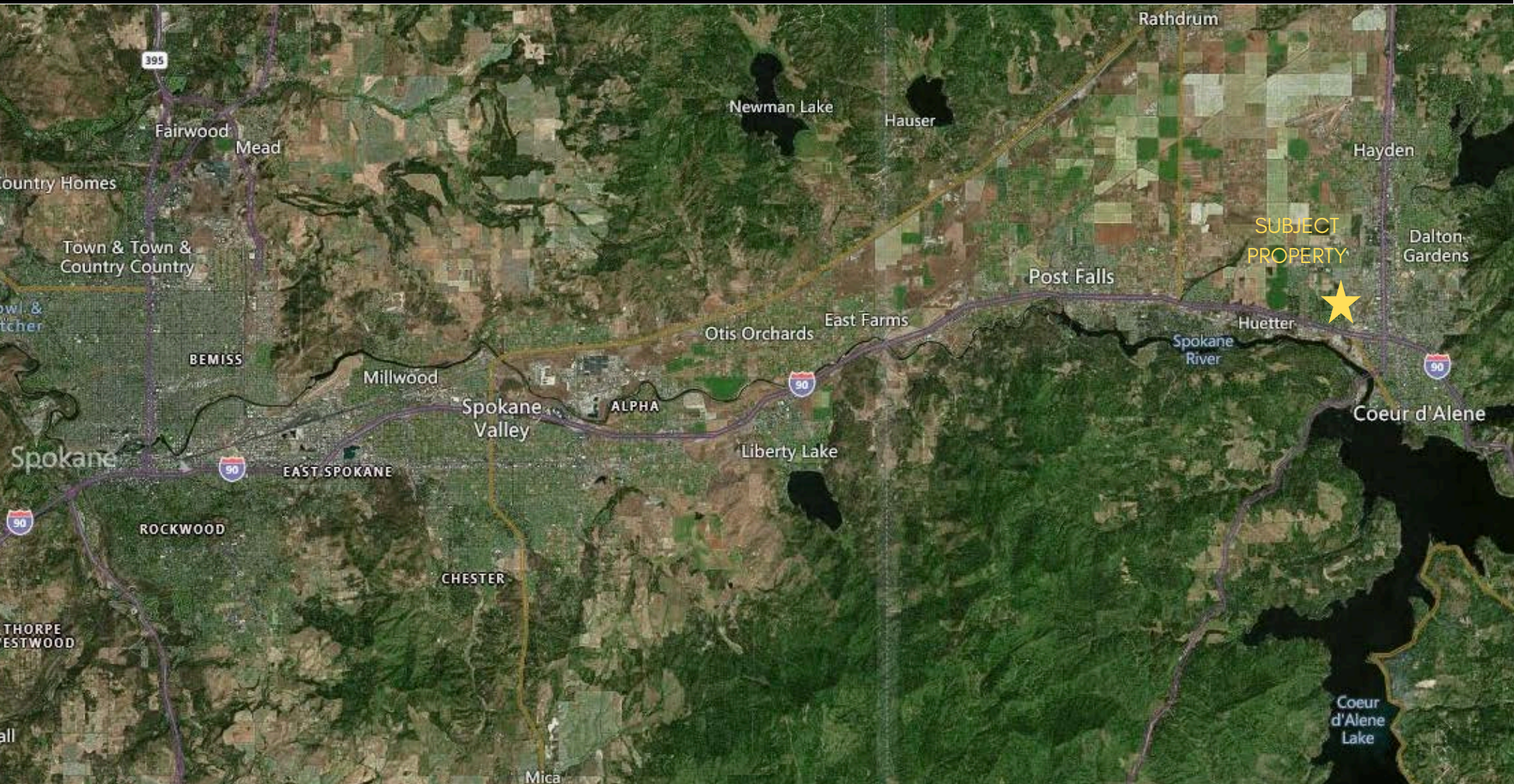


# NEARBY ATTRACTIONS





# INLAND NORTHWEST



**Donnie Murrell**

208-758-7539

donnie@7foldrealty.com

**BERKSHIRE HATHAWAY** | JACKLIN REAL ESTATE

1927 W Riverstone Dr.  
Coeur d'Alene, ID 83814

© 2025 Berkshire Hathaway Jacklin Real Estate. All rights reserved. This information has been obtained from sources believed reliable, but has not been verified for accuracy or completeness. You should conduct a careful, independent investigation of the property and verify all information. Any reliance on this information is solely at your own risk. Berkshire Hathaway Jacklin Real Estate and the BHJRE logo are service marks of Berkshire Hathaway Jacklin Real Estate. All other marks displayed on this document are the property of their respective owners, and the use of such logos does not imply any affiliation with or endorsement of Berkshire Hathaway Jacklin Real Estate. Photos herein are the property of their respective owners. Use of these images without the express written consent of the owner is prohibited. Licensed Real Estate Agent in the State of Idaho.